



2013-2015 Campus Crime Statistics

**In compliance with the Jeanne Clery Disclosure of Campus Security Policy and
Campus Crime Statistics Act.**

Issued October 2016

Table of Contents

PREPARATION OF CRIME STATISTICS.....	3
Definitions.....	4
CRIME STATISTICS	5
Main Campus	5
South of the River Education Center	8
Inver Hills at the College of St. Scholastica, St. Paul Campus	11

PREPARATION OF CRIME STATISTICS

Statistics in this report are gathered from the following sources: Security & Safety Incident Reports, Inver Grove Heights and Dakota County Law Enforcement Records, and the Student Affairs Office.

Statistical information is collected for the following categories: 1) On-campus; 2) Non-campus building or property; and 3) Public property that borders campus. All IHCC recognized organizations that are off-campus will be monitored by local police departments, who will share information with the college. In addition, for each of the categories listed above, separate statistics are included for crimes classified as hate crimes by the Uniform Crime Reporting system. Hate crimes are reportable when it has been determined that the crime was motivated by a victim's actual or perceived race, gender, religion, sexual orientation, ethnicity, *national origin*, *gender identity*¹ or disability.

The statistical information that is required to be published in this document includes reports of crimes that allegedly occurred on or near campus. The required categories are:

- Homicide:
 - Murder and Non-negligent manslaughter
 - Negligent manslaughter
- Sex Offenses:
 - Forcible
 - Non-forcible
- Robbery
- Aggravated Assault
- Burglary
- Motor Vehicle Theft
- Arson
- Hate Crimes
 - Part I - Primary
 - Murder and Non-negligent manslaughter
 - Forcible sex offenses
 - Non-forcible sex offenses
 - Robbery
 - Aggravated assault
 - Burglary
 - Motor vehicle theft
 - Arson
 - Part II- 2008 Additions
 - Larceny-theft
 - Simple assault
 - Intimidation
 - Destruction/damage/vandalism of property
 - 2014 Additions- Violence Against Women Act (VAWA)
 - Dating Violence
 - Domestic Violence
 - Stalking

¹ Added in 2013 as part of the VAWA and SaVE.

The law further requires that statistical information in this document also include reports of arrests for the following categories of arrests or referrals for campus disciplinary action if an arrest was not made:

- Liquor Law Violations
- Drug Law Violations
- Illegal Weapons Possession

Definitions

Burglary: The unlawful entry of a structure with the intent to commit a felony or theft.

Robbery: The taking or attempting to take anything of value from the care, custody or control of a person or persons by force or threat of force or violence and/or making the victim fearful.

Motor Vehicle Theft: The theft or attempted theft of a motor vehicle.

Aggravated Assault: The unlawful attack by one person upon another for the purpose of inflicting severe or aggravated bodily injury (broken bones, internal injuries, stitches required).

Non-forcible Sex Offenses: Incidents of unlawful, non-forcible sexual intercourse. Only two types of offenses are included, Incest and Statutory Rape.

Forcible Sex Offenses: Any sexual act directed against another person, forcibly and/or against that persons will; or not forcibly or against the person's will where the victim is incapable of giving consent. Reported offenses may include: Forcible rape, forcible sodomy, sexual assault with an object and forcible fondling.

Criminal Homicide-murder and Non-negligent manslaughter: The willful (non-negligent) killing of one human being by another.

Criminal Homicide manslaughter by negligence: The killing of another person through gross negligence.

Arson: Any willful or malicious burning or attempted to burn, with or without internet to defraud, a dwelling house, public building, motor vehicle or aircraft, or personal property of another.

Weapons law violations: The violation of laws or ordinances dealing with weapon offenses, regulatory in nature, such as manufacturing, sale, or possession of deadly weapons; carrying deadly weapons, concealed or openly; furnishing deadly weapons to minors, and attempts to commit any of the aforementioned.

Drug Abuse Violation: Violations of state and local laws relating to the unlawful possession, sale, use, growing, manufacturing, and making of narcotic drugs.

Liquor Law Violation: The violation of laws or ordinances prohibiting the manufacturing, sale, transporting, furnishing, possessing, of intoxicating liquor; maintaining unlawful drinking places, bootlegging, operating a still, furnishing liquor to a minor or intemperate person; using a vehicle for illegal transportation of liquor; drinking on a public conveyance, and all attempts to commit any of the aforementioned.

Hate Crimes: Any of the above crimes, crime involving bodily injury reported to local law enforcement or campus security, and/or crimes of larceny-theft, simple assault, intimidation, and

destruction/damage/vandalism of property which manifest evidence or prejudice based on race religion, *national origin*², sexual orientation, *gender identity*³, ethnicity, disability and gender.

CRIME STATISTICS

Main Campus

INVER HILLS MAIN CAMPUS (Includes Statistics from Thomson Reuters Location)

2500 80th Street East, Inver Grove Heights, MN

OFFENSE	ON CAMPUS			Noncampus			Public Property		
	2013	2014	2015	2013	2014	2015	2013	2014	2015
Murder/Non-Negligent Manslaughter	0	0	0	0	0	0	0	0	0
Negligent Manslaughter	0	0	0	0	0	0	0	0	0
Sex Offenses, Forcible	1	0	0	0	0	0	0	0	0
Rape		0	0		0	0		0	0
Fondling		0	0		0	0		0	0
Sex Offenses, Non-Forcible	0	0	0	0	0	0	0	0	0
Incest		0	0		0	0		0	0
Statutory Rape		0	0		0	0		0	0
Robbery	0	0	0	0	0	0	0	0	0
Aggravated Assaults	2	0	0	0	0	0	0	0	0
Burglary	0	0	0	0	0	0	0	0	0
Motor Vehicle Theft	0	0	0	0	0	0	0	0	0
Arson	0	0	0	0	0	0	0	0	0

² National Origin added in 2014

³ Gender Identity added in 2014

MAIN CAMPUS

VAWA (Violence Against Women Act, 2014)									
Offense	ON CAMPUS			Noncampus			Public Property		
	2013	2014	2015	2013	2014	2015	2013	2014	2015
Domestic Violence		1	0		0	0		0	0
Dating Violence		0	0		0	0		0	0
Stalking		1	0		0	0		0	0

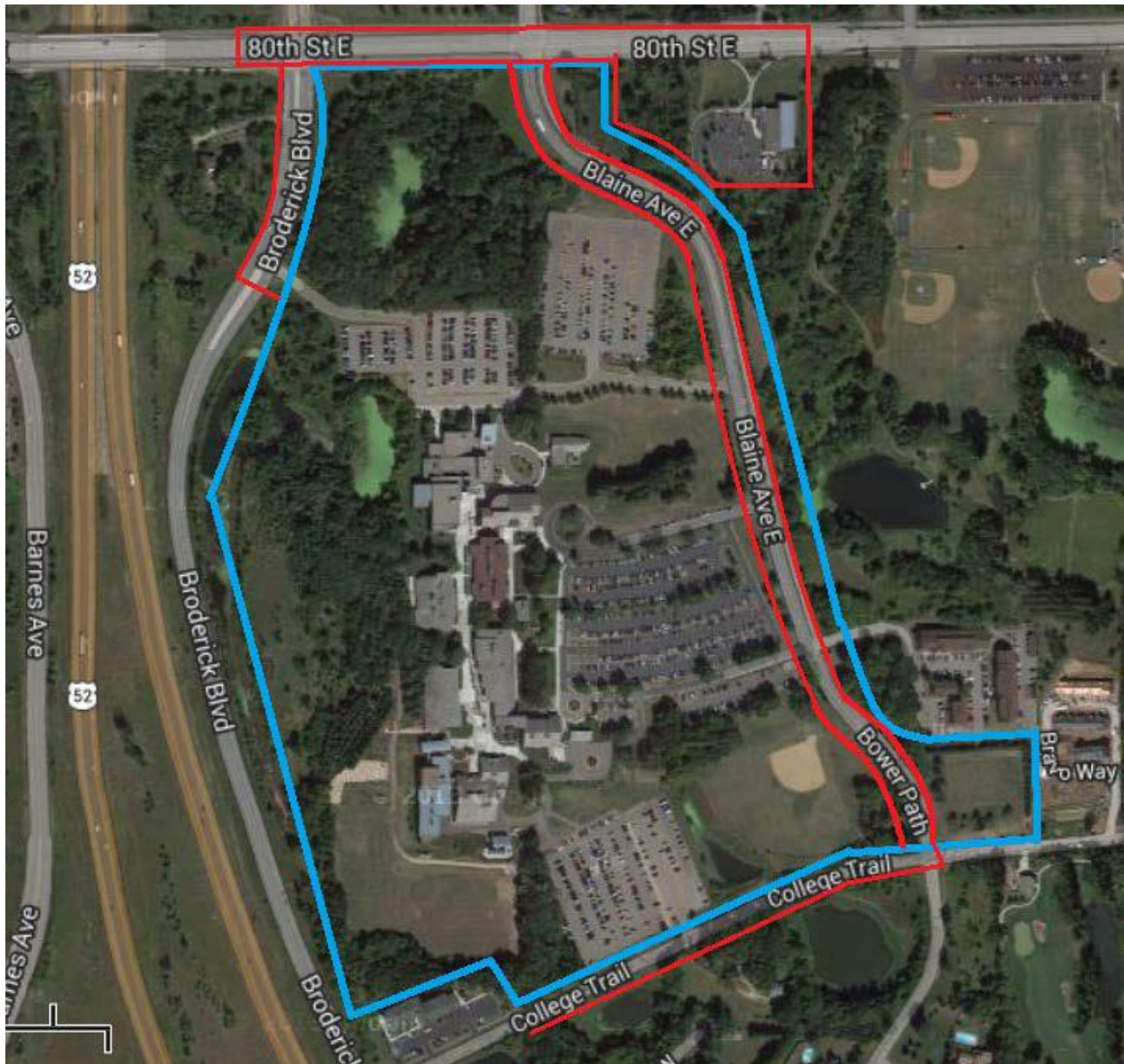
ARREST									
Offense	ON CAMPUS			Noncampus			Public Property		
	2013	2014	2015	2013	2014	2015	2013	2014	2015
Weapons	0	0	0	0	0	0	0	0	0
Drug Abuse	0	0	0	0	0	0	0	0	0
Liquor Laws	0	0	0	0	0	0	0	0	0

DISCIPLINARY ACTIONS									
Offense	ON CAMPUS			Noncampus			Public Property		
	2013	2014	2015	2013	2014	2015	2013	2014	2015
Weapons	0	0	0	0	0	0	0	0	0
Drug Abuse	0	0	0	0	0	0	0	0	0
Liquor Laws	0	0	0	0	0	0	0	0	0

- 2014: One on-campus Destruction/Damage/Vandalism of Property incident characterized by racial bias.
 One on campus Destruction/Damage/Vandalism of Property incident characterized by religious bias.
- 2013: One on-campus Destruction/Damage/Vandalism of Property incident characterized by religious bias.
 One on-campus Destruction/Damage/Vandalism of Property incident characterized by racial bias.

Inver Hills Community College does not operate any student housing facilities.

Inver Hills Community College Main Campus: Inver Grove Heights, Minnesota



The area outlined in Blue represents Campus Property. The property is controlled by the college.

The area outlined in Red represents Public Property. It include two public streets that run through campus property, three streets immediately adjacent to campus that is accessible, and a public library adjacent to campus. (Clery excludes inside the public library; only the property surrounding it is included in this report under Public Property.)

South of the River Education Center

SOUTH OF THE RIVER EDUCATION CENTER

2800 County Road 42 (Egan Drive), Burnsville, MN 55337

OFFENSE	ON CAMPUS			Noncampus			Public Property		
	2013	2014	2015	2013	2014	2015	2013	2014	2015
Murder/Non-Negligent Manslaughter	0	0	0	0	0	0	0	0	0
Negligent Manslaughter	0	0	0	0	0	0	0	0	0
Sex Offenses, Forcible	1	0	0	0	0	0	0	0	0
Rape		0	0		0	0		0	0
Fondling		0	0		0	0		0	0
Sex Offenses, Non-Forcible	0	0	0	0	0	0	0	0	0
Incest		0	0		0	0		0	0
Statutory Rape		0	0		0	0		0	0
Robbery	0	0	0	0	0	0	0	0	0
Aggravated Assaults	2	0	0	0	0	0	0	0	0
Burglary	0	0	0	0	0	0	0	0	0
Motor Vehicle Theft	0	0	0	0	0	0	0	0	0
Arson	0	0	0	0	0	0	0	0	0

SOUTH OF THE RIVER EDUCATION CENTER

VAWA (Violence Against Women Act, 2014)									
Offense	ON CAMPUS			Noncampus			Public Property		
	2013	2014	2015	2013	2014	2015	2013	2014	2015
Domestic Violence		0	0		0	0		0	0
Dating Violence		0	0		0	0		0	0
Stalking		0	0		0	0		0	0

ARREST									
Offense	ON CAMPUS			Noncampus			Public Property		
	2013	2014	2015	2013	2014	2015	2013	2014	2015
Weapons	0	0	0	0	0	0	0	0	0
Drug Abuse	0	0	0	0	0	0	0	0	0
Liquor Laws	0	0	0	0	0	0	0	0	0

DISCIPLINARY ACTIONS									
Offense	ON CAMPUS			Noncampus			Public Property		
	2013	2014	2015	2013	2014	2015	2013	2014	2015
Weapons	0	0	0	0	0	0	0	0	0
Drug Abuse	0	0	0	0	0	0	0	0	0
Liquor Laws	0	0	0	0	0	0	0	0	0

2014: No Hate Crimes Reported.
 2013: No Hate Crimes Reported.

South of the River Education Center: Burnsville, Minnesota



The area outlined in Blue represents Campus Property. The property is leased by the college.

The area outlined in Red represents Public Property. It includes two transit stations that service campus and public sidewalks that are immediately adjacent and accessible to campus.

Inver Hills at the College of St. Scholastica, St. Paul Campus

INVER HILLS AT THE COLLEGE OF ST. SCHOLASTICA, ST. PAUL CAMPUS

340 Cedar Street, Suite 50, St. Paul

OFFENSE	ON CAMPUS			Noncampus			Public Property		
	2013	2014	2015	2013	2014	2015	2013	2014	2015
Murder/Non-Negligent Manslaughter	0	0	0	0	0	0	0	0	0
Negligent Manslaughter	0	0	0	0	0	0	0	0	0
Sex Offenses, Forcible	1	0	0	0	0	0	0	0	0
Rape		0	0		0	0		0	0
Fondling		0	0		0	0		0	0
Sex Offenses, Non-Forcible	0	0	0	0	0	0	0	0	0
Incest		0	0		0	0		0	0
Statutory Rape		0	0		0	0		0	0
Robbery	0	0	0	0	0	0	0	0	0
Aggravated Assaults	2	0	0	0	0	0	0	0	0
Burglary	0	0	0	0	0	0	0	0	0
Motor Vehicle Theft	0	0	0	0	0	0	0	0	0
Arson	0	0	0	0	0	0	0	0	0

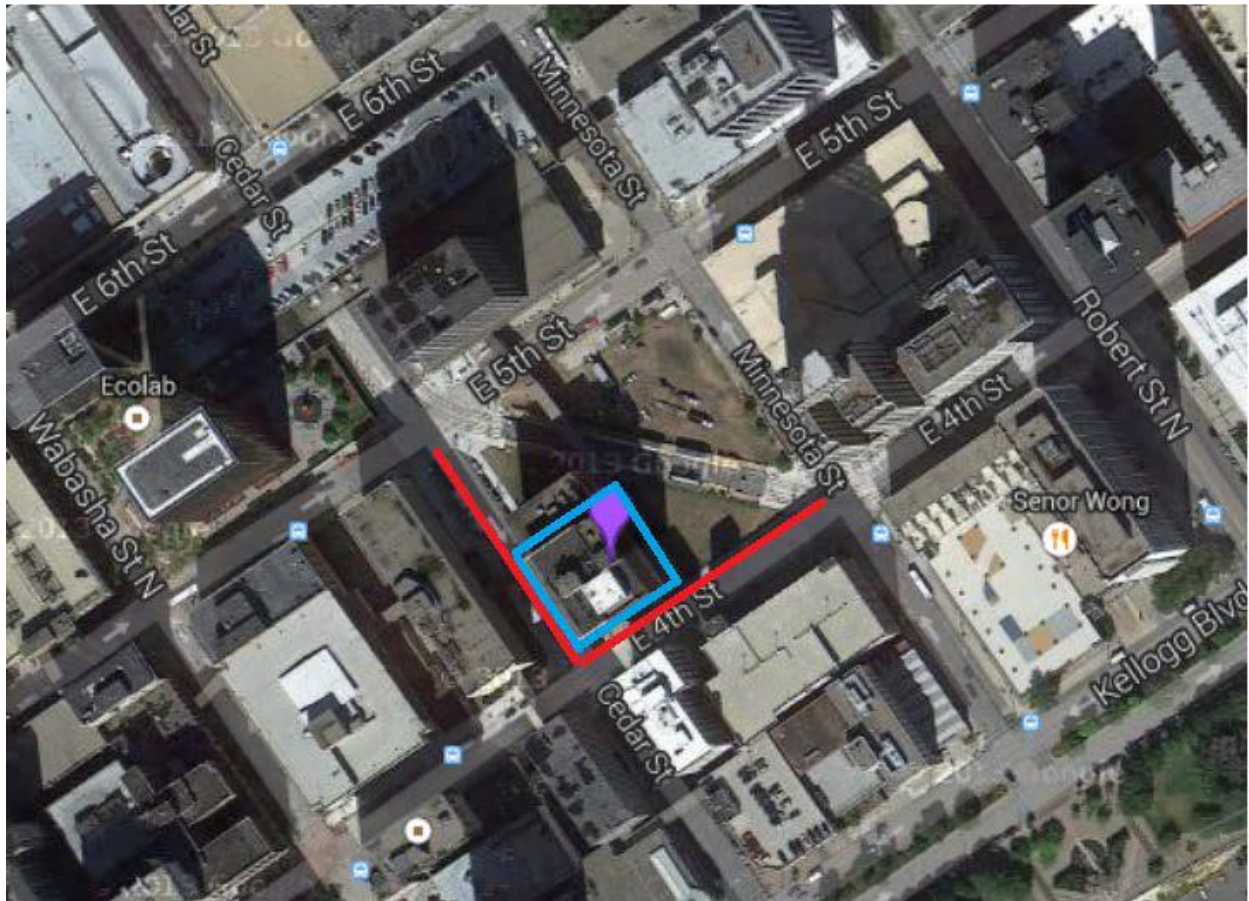
INVER HILLS AT THE COLLEGE OF ST. SCHOLASTICA

VAWA (Violence Against Women Act, 2014)									
Offense	ON CAMPUS			Noncampus			Public Property		
	2013	2014	2015	2013	2014	2015	2013	2014	2015
Domestic Violence		0	0		0	0		0	0
Dating Violence		0	0		0	0		0	0
Stalking		0	0		0	0		0	0

ARREST									
Offense	ON CAMPUS			Noncampus			Public Property		
	2013	2014	2015	2013	2014	2015	2013	2014	2015
Weapons	0	0	0	0	0	0	0	0	0
Drug Abuse	0	0	0	0	0	0	0	0	0
Liquor Laws	0	0	0	0	0	0	0	0	0

DISCIPLINARY ACTIONS									
Offense	ON CAMPUS			Noncampus			Public Property		
	2013	2014	2015	2013	2014	2015	2013	2014	2015
Weapons	0	0	0	0	0	0	0	0	0
Drug Abuse	0	0	0	0	0	0	0	0	0
Liquor Laws	0	0	0	0	0	0	0	0	0

The College of St. Scholastica St. Paul Campus: St. Paul, Minnesota.



The area outlined in Blue represents Campus Property. The property is leased by the college.

The area outlined in Red represents Public Property. It includes transit stations that service campus and public sidewalks that are immediately adjacent and accessible to campus.