

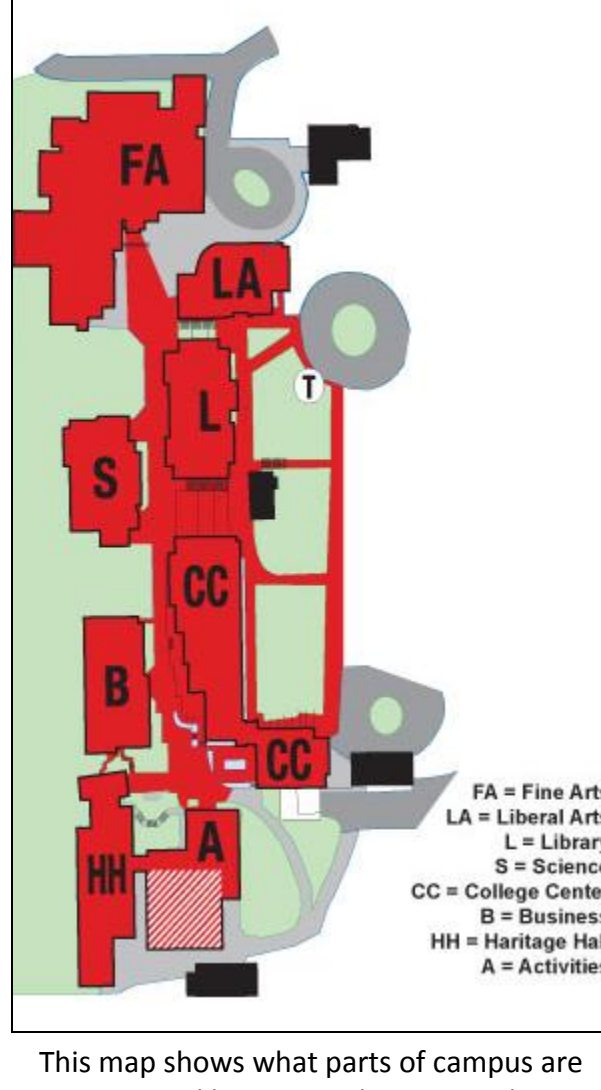
# Connecting to the Wireless Network

## What is SafeConnect?

SafeConnect is a bring-your-own-device (BYOD) network access control technology the college uses to provide wireless network services that comply with Minnesota State Colleges and Universities Board of Trustee policy. Board of Trustee policy currently has two primary requirements:

- Specific network behavior must be attributable to an individual
- Devices on the network must be configured to prevent abuse

Please refer to the [SafeConnect frequently asked questions \(FAQ\)](#) for answers to some specific questions. If you have remaining questions after reviewing the information provided, please request assistance (see Getting Help) or visit the IT Service Desk in the IT Center.

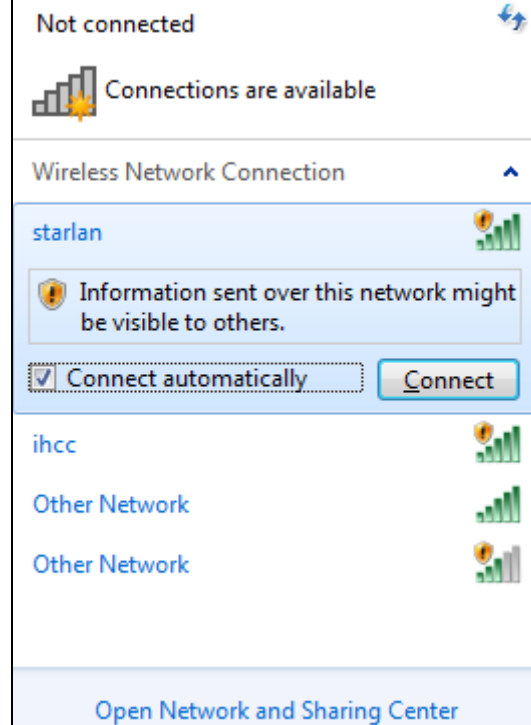
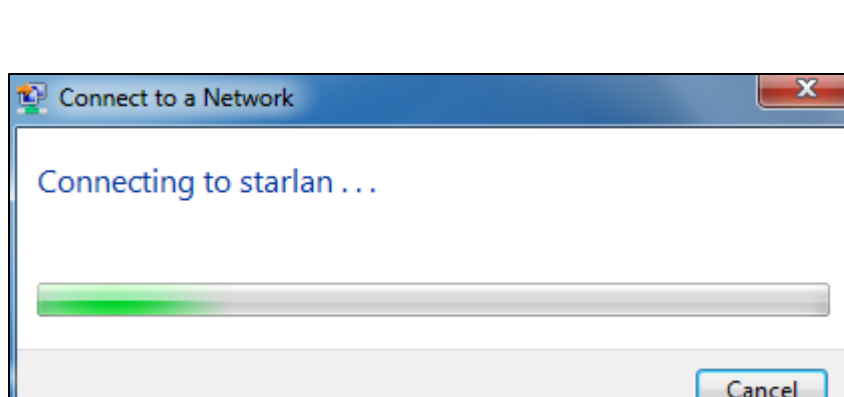


This map shows what parts of campus are covered by our wireless network

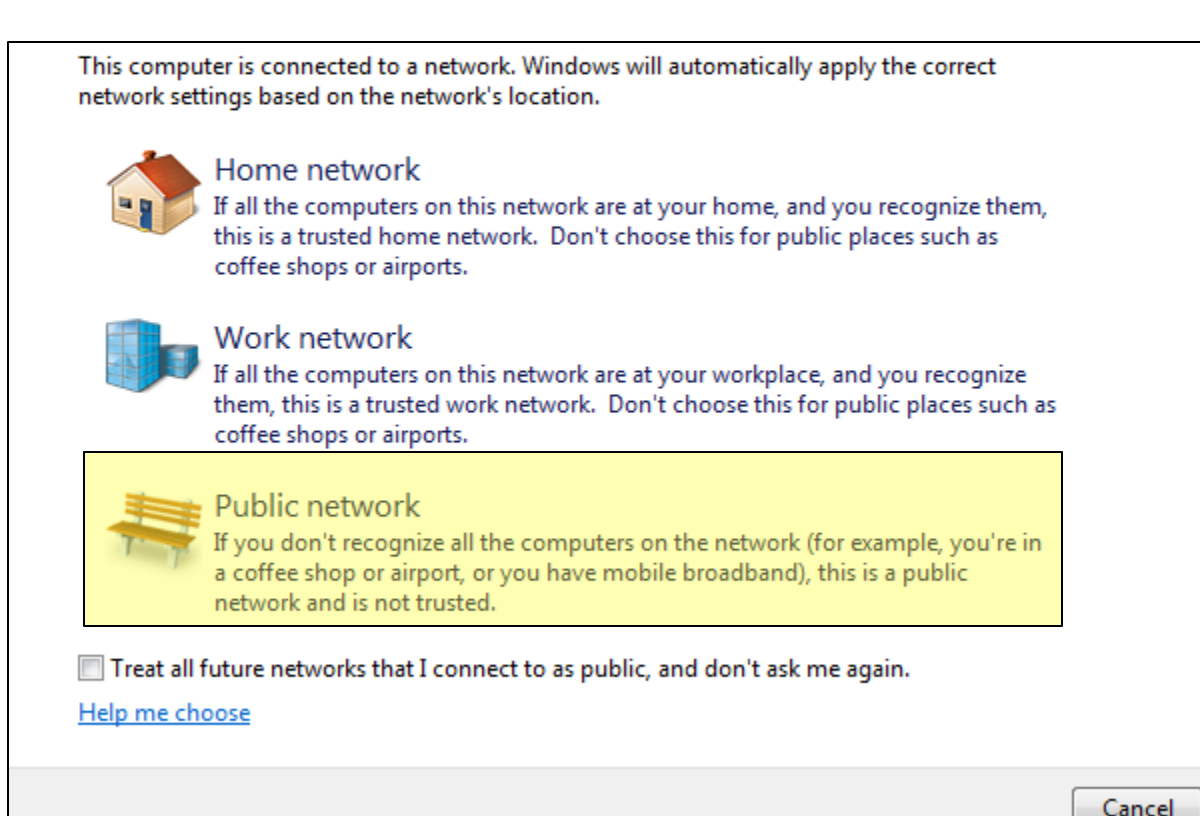
## Connecting to the Wireless Network (Windows)



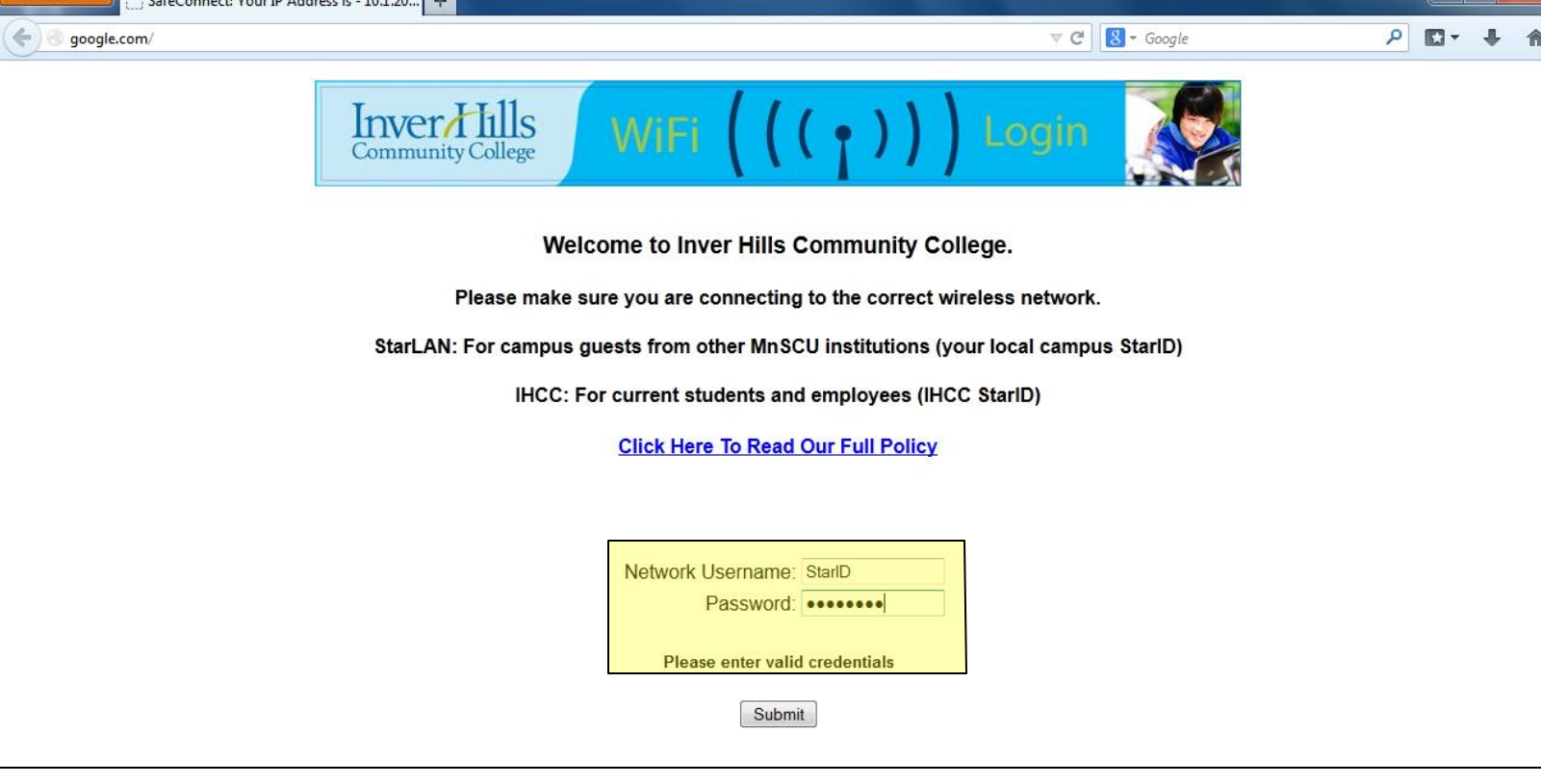
Begin by clicking on the wireless icon in the bottom right corner



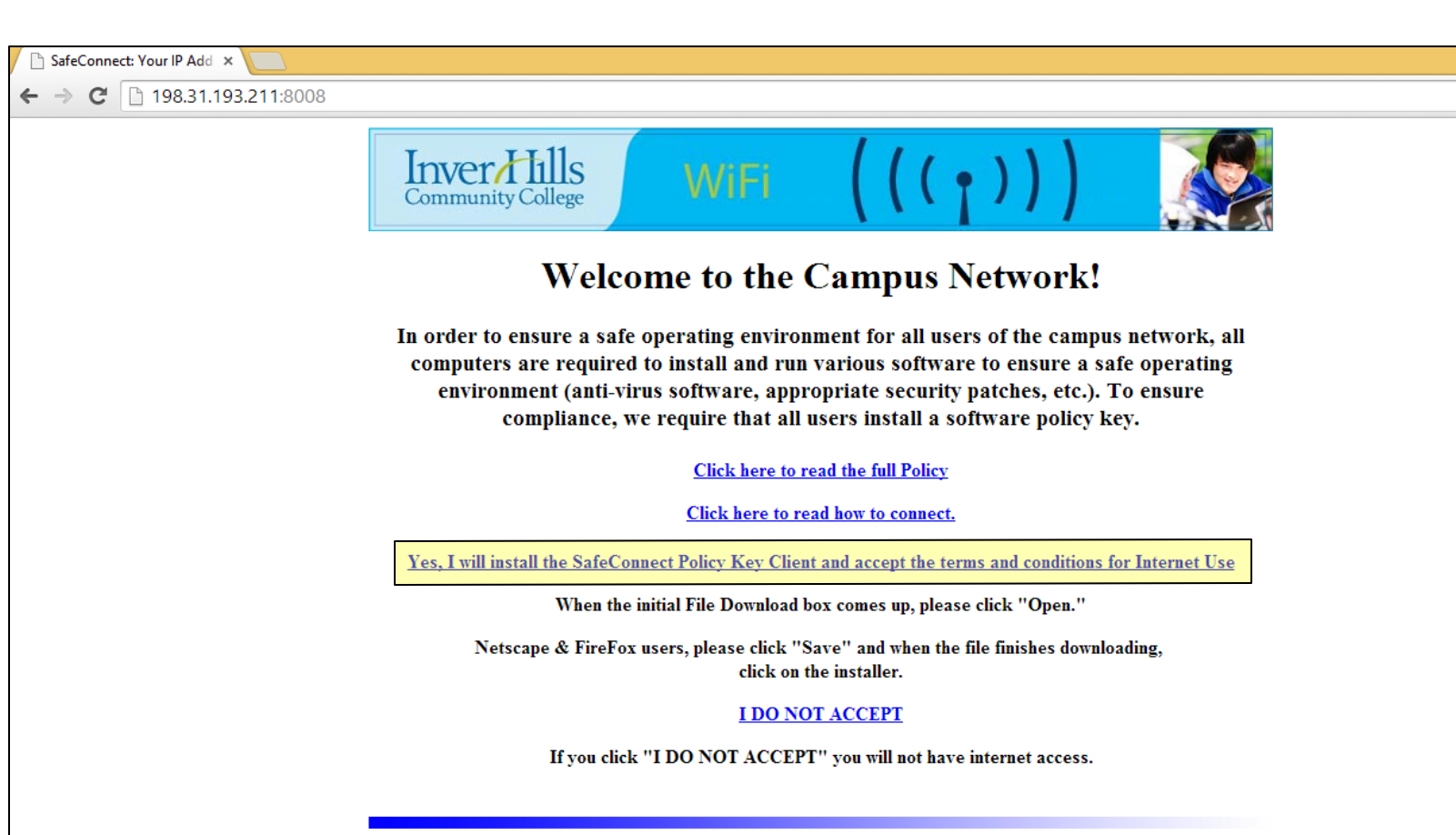
Select the StarLan network and click connect.



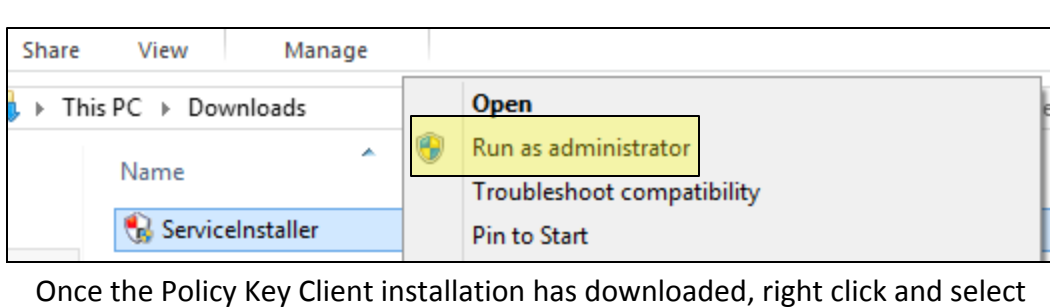
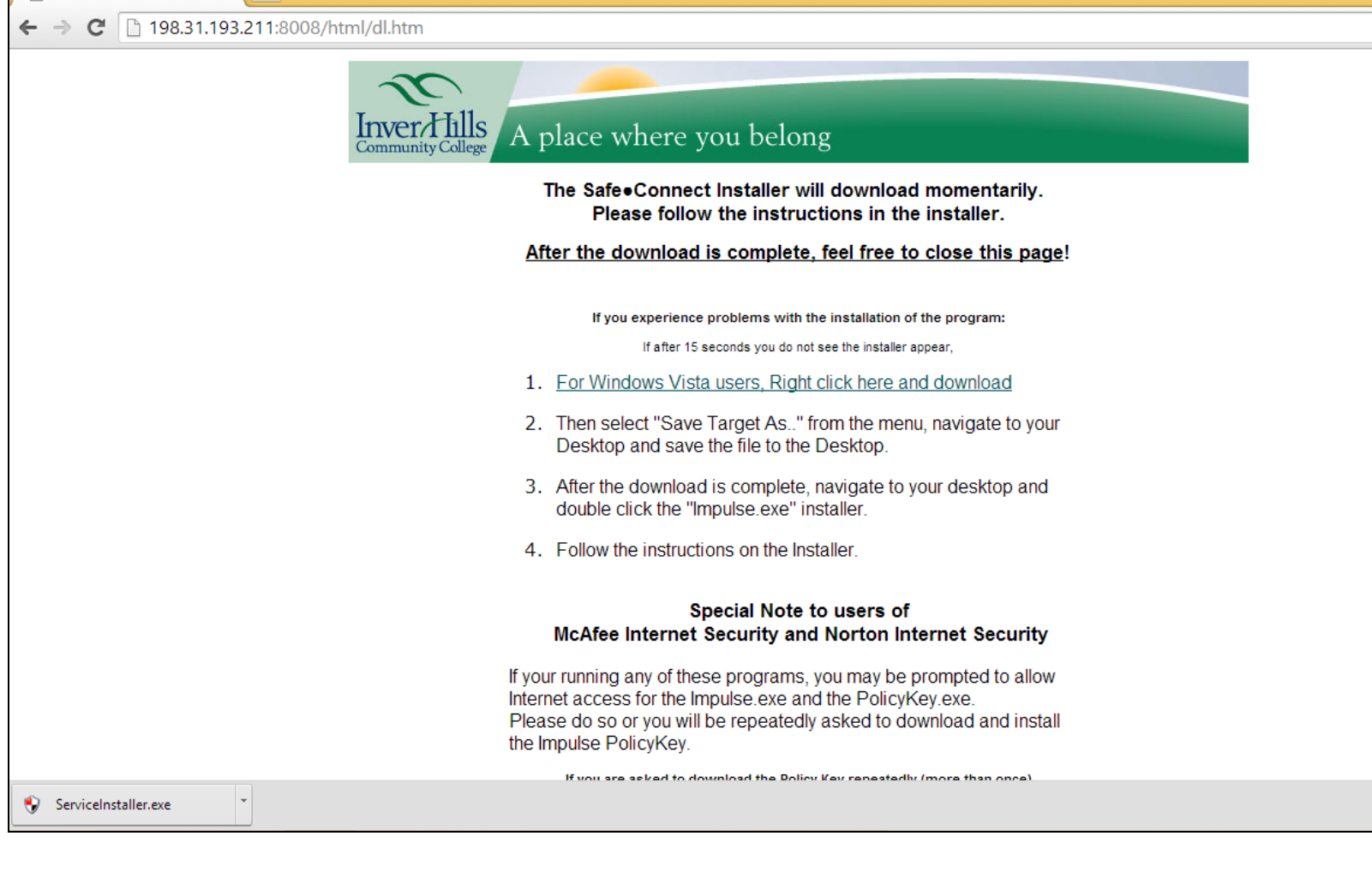
Select Public network and open up a web browser



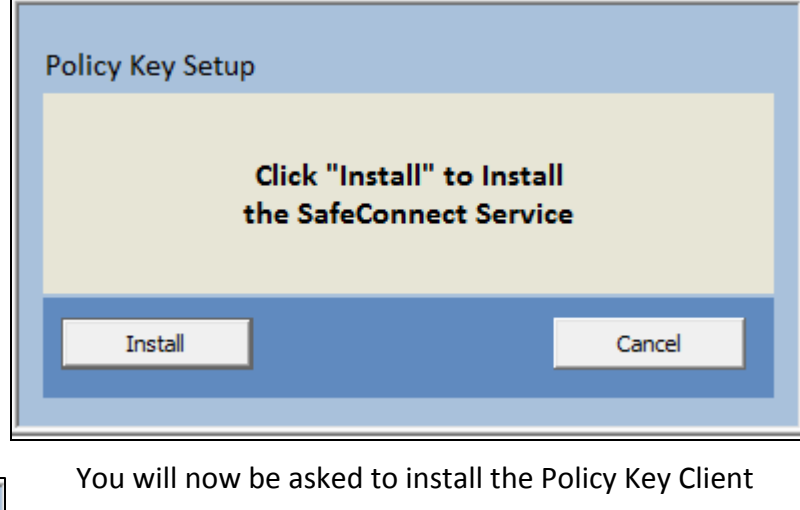
You will be challenged by the SafeConnect site. Authenticate using your StarID and password.



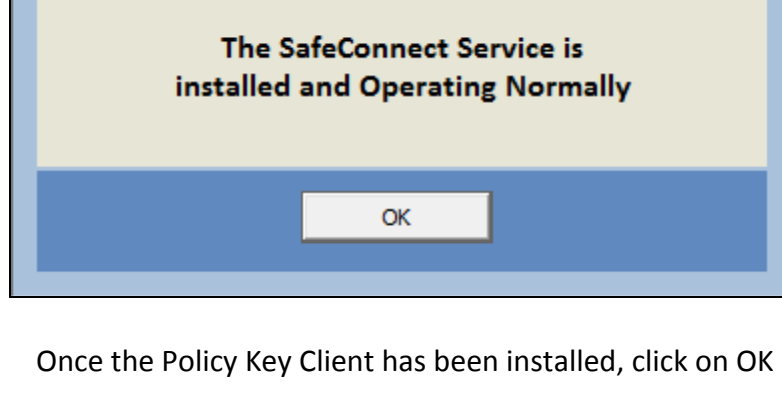
You will then be asked to install the Policy Key Client. If you do not wish to install the Policy Key Client, you will not be granted access.



Once the Policy Key Client installation has downloaded, right click and select run as administrator.



You will now be asked to install the Policy Key Client



Once the Policy Key Client has been installed, click on OK



You will now be connected to the Internet